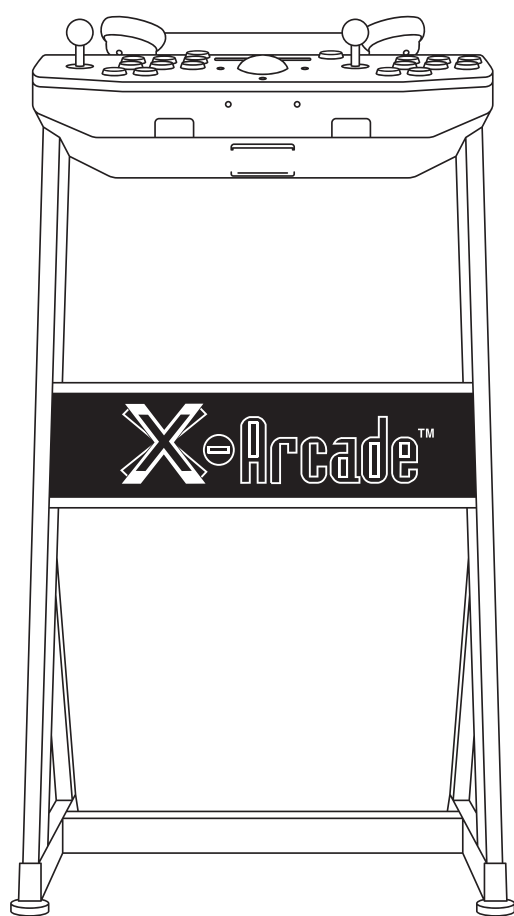




ARCADE2TV-XR USER MANUAL



ARCADE2TV™-XR USER MANUAL

1. INTRODUCTION	1
2. SAFETY INFORMATION	2
3. PACKAGE CONTENTS	4
4. FEATURES OVERVIEW	5
5. PRODUCT OVERVIEW	7
6. ASSEMBLY INSTRUCTIONS	11
7. SETTING UP YOUR ARCADE2TV-XR	15
8. CONNECTING TO A PC/MAC	20
9. CONNECTING TO A GAME CONSOLE	21
10. OPERATION INSTRUCTIONS	24
USING WITH PC/MAC	24
USING WITH EMULATORS	26
USING WITH GAME CONSOLES	28
11. USING THE TOUCH PANEL	34
MODE AND TURBO FEATURES	34
CHANGING RGB LIGHTING EFFECTS	35
12. KEY MAPPING CUSTOMIZATION AND FIRMWARE UPGRADES	36
13. VR AND XR MODE INSTRUCTIONS	38
14. DEFAULT KEY MAPPING	41
KEYBOARD MODE	41
DINPUT MODE	41
XINPUT MODE	41
15. SWAPPING THE BALL KNOB AND CHANGING THE RESTRICTOR GATE	42
16. USING MAGNETIC HOOKS AND STORAGE SPACES	45
17. TROUBLESHOOTING	46
18. MAINTENANCE AND CLEANING	49
CLEANING THE TRACKBALL	49
GENERAL MAINTENANCE TIPS	50
19. WARRANTY INFORMATION	54
20. FCC COMPLIANCE STATEMENT	55

1. Introduction

Welcome to the world of unparalleled gaming with the X-Arcade™ ARCADE2TV™-XR! We are thrilled to present you with the ultimate arcade gaming experience that bridges the gap between retro nostalgia and cutting-edge technology. Whether you're a seasoned arcade enthusiast or a new gamer looking to explore the charm of arcade the classics, ARCADE2TV™-XR is designed to deliver an immersive and customizable gaming adventure.

The ARCADE2TV™-XR is more than just a gaming console; it's a gateway to a vibrant gaming universe. With its commercial-grade components, adjustable design, and compatibility with multiple control modes and gaming platforms, this arcade system is built to meet the demands of all gamers. The integration of high-quality trackballs, pinball buttons, and RGB lighting effects ensures that every gaming session is an exciting and visually stunning experience.

We understand that every gamer is unique, which is why the ARCADE2TV™-XR comes with a host of customizable features. From adjustable height settings to interchangeable joystick knobs and restrictor gates, you can tailor your arcade setup to match your personal preferences. Plus, with exclusive VR games like Arcade Ranger and Quantaar VR included, you can step into a world of virtual reality and mixed reality gaming like never before.

This user manual will guide you through every step of setting up and maximizing your ARCADE2TV™-XR. Whether you're connecting to a PC, Mac™, or a variety of gaming consoles, you'll find detailed instructions to help you get started quickly and easily. Additionally, our advanced touch panel and key mapping customization tools allow you to fine-tune your controls and lighting effects, ensuring your gaming experience is always at its best.

Thank you for choosing the X-Arcade™ ARCADE2TV™-XR. We're confident that this innovative arcade system will provide endless hours of fun and excitement for you, your family, and your friends. Get ready to relive the glory days of arcade gaming while exploring new frontiers in virtual reality. Let the games begin!

2. Safety Information

Your safety and the safety of others are very important to us. To ensure safe and reliable operation of your X-Arcade™, ARCADE2TV™-XR, please read and follow all safety instructions carefully.

General Safety Guidelines

Read All Instructions: Before using your ARCADE2TV™-XR, read all instructions in this manual thoroughly.

Keep Away from Water: Do not use the ARCADE2TV™-XR near water or moisture. Avoid placing it in areas where it may come into contact with liquids, such as near sinks, bathtubs, or swimming pools.

Proper Ventilation: Ensure that the ARCADE2TV™-XR has adequate ventilation. Do not block any ventilation openings. Place the unit on a stable, flat surface to prevent overheating.

Avoid Heat Sources: Keep the ARCADE2TV™-XR away from heat sources such as radiators, stoves, or other appliances that produce heat.

Use Correct Power Source: Connect the ARCADE2TV™-XR to a properly grounded outlet. Use only the power adapter provided with the unit. Do not use extension cords or power strips that may exceed the rated capacity (Maximum 5V).

Cleaning: Unplug the ARCADE2TV™-XR before cleaning. Use a dry cloth to clean the exterior. Do not use liquid cleaners or aerosol sprays.

Handling and Moving: When moving the ARCADE2TV™-XR, use the wheels provided and be cautious of your surroundings to avoid damage.

Children's Safety: Supervise children when they are using the ARCADE2TV™-XR. Ensure that they understand the safe operation of the unit and do not allow them to play with cables or connections.

Electrical Safety

Power Cord Protection: Route power cords in a manner that protects them from being walked on, pinched, or damaged. Pay particular attention to cords at plugs, convenience receptacles, and points where they exit from the unit.

Lightning Storms: During a lightning storm, or when the ARCADE2TV™-XR will not be used for an extended period, unplug the unit from the power outlet to prevent damage from power surges.

Damage Requiring Service: If the ARCADE2TV™-XR has been damaged (e.g., the cord power cord or plug is damaged, liquid has been spilled on it, objects have fallen into it, it has been exposed to rain or moisture, it does not operate normally, or it has been dropped), unplug the unit and contact customer support for service.

Usage Precautions

Do Not Modify: Do not attempt to modify or repair the ARCADE2TV™-XR yourself. Unauthorized modifications can damage the unit and void your warranty.

Accessories and Attachments: Use only the accessories and attachments provided with the ARCADE2TV™-XR or recommended by X-Arcade™. Improper accessories may cause damage or pose a safety risk.

Follow Instructions: Always follow the instructions provided in this manual for assembly, setup, and use of the ARCADE2TV™-XR. Failure to do so may result in injury or damage to the unit.

By following these safety guidelines, you can ensure that your X-Arcade™ ARCADE2TV™-XR provides a safe and enjoyable gaming experience for everyone. If you have any questions or concerns about the safety of your unit, please contact our customer support team.

3. Package Contents

Get ready to dive into the ultimate arcade experience with your X-Arcade™ ARCADE2TV™-XR! Here's what you'll find in your two boxes. If any items are missing or damaged, contact our customer support team immediately to keep the excitement rolling.

Box 1: Arcade2TV-XR™ Controller

- ARCADE2TV™-XR Controller - The heart of your arcade gaming experience.
- 2 port USB Power Adapter for RGB Lighting - Light up your gaming sessions with vibrant colors (for powering the RGB light strip and HECATE soundbar).
- Lighting Cable - Connects the RGB lighting for a stunning visual effect.
- 3-meter USB-B to USB-A Cable - Connect your controller to your PC or Mac™ with ease.
- 3-meter USB-C to USB-A Cable - For connecting to the USB power adapter.
- DB9 Adapter for X-Adapters - Ready for future upgrades with various gaming consoles (X-Adapters sold separately).
- Bluetooth™ Dongle - Seamlessly connect to VR headsets like Meta™ Quest™ 2/3.
- Hex Wrench (inside control unit's storage compartment) - For easy to change the joystick knobs.
- Allen Wrench (inside control unit's storage compartment) - For height adjustment.
- Four sets of different joystick restrictors- 4-way, circular, and octagonal
- Two Spare Oval Knobs (Inside control unit's storage compartment) - Customize your joystick control to your liking.
- User Manual - Your comprehensive guide to mastering the ARCADE2TV™-XR.
- Two VR Games Redeem Codes for the ARCADE2TV™-XR dedicated VR games - Jump into virtual reality with Arcade Ranger and Quantaar VR.

Box 2: Adjustable Pedestal

- Unassembled ARCADE2TV™ Pedestal Parts - Build your sturdy pedestal for a perfect arcade setup.
- User Guide for Assembly - Step-by-step instructions to get you set up quickly.

4. Features Overview

Welcome to the next level of arcade gaming with the X-Arcade™ ARCADE2TV™-XR ! Here's a glimpse of what makes this arcade system truly exceptional:

Commercial-Grade Quality

Built to last with high-quality joystick and buttons designed for up to 10 million uses, providing durability and responsiveness.

Adjustable Design

Game comfortably standing or sitting with four height settings, perfect for all ages.

Multiple Control Modes

Switch between keyboard / mouse, DINPUT, XINPUT, and VR mode, offering flexibility for any game.

Extensive Compatibility

Connect to PS5™, PS4™, Xbox Series X/S, Xbox One™, Xbox 360™, and more with optional adapters (sold separately).

Other X-Adapters:

- 2-in-1 X-Adapter: Supports PS3 and Original Xbox control.
- 5-in-1 X-Adapter: Supports Wii, PS2, PS1, GameCube, and Dreamcast control.

High-Quality Trackball and Pushbuttons

Experience precision control for classic arcade games and pinball simulations.

RGB Lighting Effects

Customize your gaming space with vibrant, adjustable RGB lighting.

Exclusive VR Games

Enjoy two exclusive VR games, Arcade Ranger and Quantaar VR, included via Meta™ Store redeem codes.

Upgradeable Firmware

Keep your system up-to-date with easy firmware upgrades using the X-Arcade™ ARCADE2TV™-XR Configuration Tool.

Key Mapping Customization

Personalize your controls with customizable key mappings using our configuration software.

Seamless VR and XR Integration

Connect your Meta™ Quest™ 2/3 headset with the included Bluetooth™ dongle for immersive VR and XR gaming.

Swappable Components

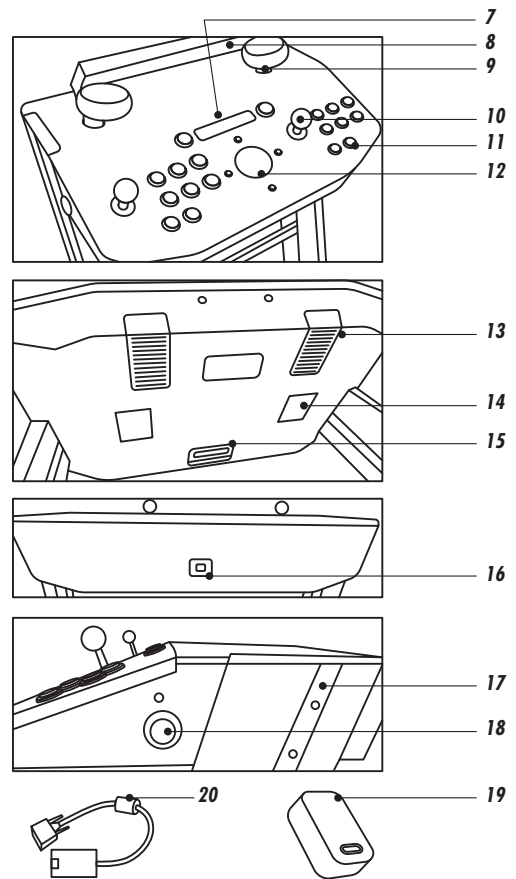
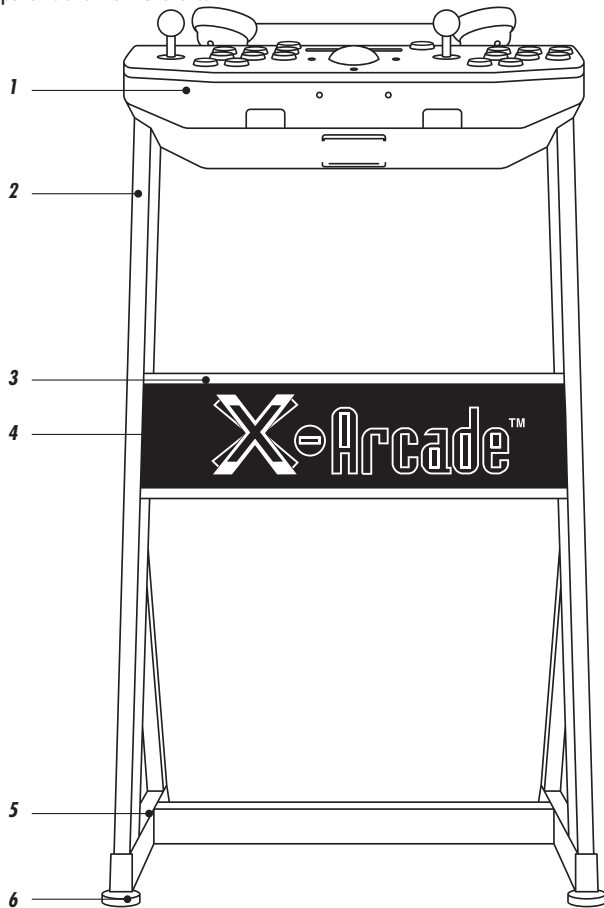
Customize your joystick with swappable ball knobs and restrictor gates for 4-way and 8-way controls.

Convenient Storage and Magnetic Hooks

Built-in storage for the hex wrench and spare knobs, with magnetic hooks for hanging your VR headset, controllers, or headphones.

5. Product Overview

Below are the images of your X-Arcade™ ARCADE2TV™-XR, highlighting the main components and their functions.



1. **Control Unit:** The main gaming interface, featuring high-quality joysticks, buttons, and trackball for an authentic arcade experience.
2. **Adjustable Pedestal:** Supports the control unit and allows for height adjustment to suit standing or sitting positions.
3. **LED Lighting Strip:** Located at the top side of the acrylic panel, provides customizable RGB lighting effects to enhance the visual appeal.
4. **Laser-Engraved Acrylic Panel:** Displays the X-Arcade™ logo, with the RGB light strip illuminating the panel to create a unique 3D RGB lighting effect.
5. **Wheels:** Facilitate moving the ARCADE2TV™-XR pedestal.
6. **Leveling Feet:** Adjustable feet at the bottom of the pedestal to ensure stability on uneven surfaces.
7. **Touch Panel:** Allows for mode switching, turbo setting, RGB lighting control, and switching between driver modes.
8. **HECATE Wireless Gaming Sound Bar:** Optional accessory available for purchase as a bundle.
9. **VR Headset Controller Holder:** VR Headset Controller Holder: Holds VR controllers and maps the virtual arcade machine to the physical ARCADE2TV™-XR in VR or MR mode, allowing immersive gameplay.
10. **Player's Joystick:** High-quality joystick for precise control.
11. **Player's Pushbuttons:** Durable pushbuttons for an authentic arcade experience.
12. **Arcade Trackball:** Provides accurate and smooth control for trackball games.

13. **Magnetic Hooks:** Attached to the control unit for hanging VR headsets, controllers, or headphones.
14. **Storage Compartments:** Located under the control unit, containing a hex wrench for changing knobs and an Allen wrench for tightening the side sliders.
15. **Spring Grip:** Located at the bottom center near the back of the control unit, used to compress and move the locking blocks inwards for installation and height adjustment.
16. **USB Ports:** Includes a USB-B port for connecting to computers or consoles and a USB-C port for powering the LED lighting strip.
17. **Side Sliders:** Allow for smooth adjustment and secure placement of the control unit on the pedestal.
18. **Pinball Flipper Buttons:** Provides additional controls for pinball games.
19. **Bluetooth™ Dongle:** Used for wireless connection to VR headsets or PCs.
20. **DB9 Adapter:** Connect ARCADE2TV™-XR to this before connecting to available X-Adapters. Essentially converts to DB9 socket for X-Adapter use for connecting to all game consoles.

6. Assembly Instructions

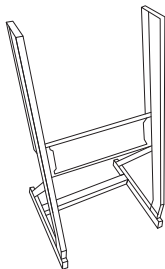
Assembling your X-Arcade™ ARCADE2TV™-XR involves two main steps: assembling the pedestal and installing the ARCADE2TV™-XR control unit onto the pedestal. Follow these steps to get your arcade system ready for action.

Unboxing and Component Checklist

1. Carefully unbox the contents of the two packages.
2. Verify that you have all the necessary components listed in the package contents section.

Assembling the Pedestal

The pedestal comes unassembled. Follow the instructions included in the pedestal package to complete its assembly.

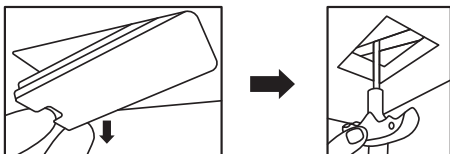


Installing the ARCADE2TV™-XR Control Unit onto the Pedestal

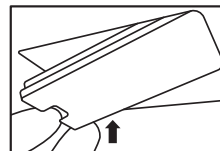
This step is best done with two people for safety and ease.

1. Prepare the Control Unit

- Take out the hex wrench from the storage under the control unit.

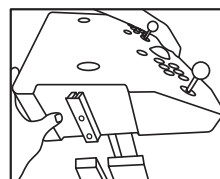


- Close the storage door.

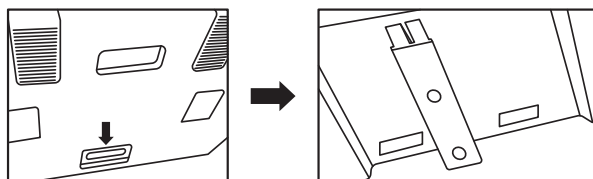


2. Lift the Control Unit

- One person should hold the front of the control unit with one hand and the back of the unit with the other hand.

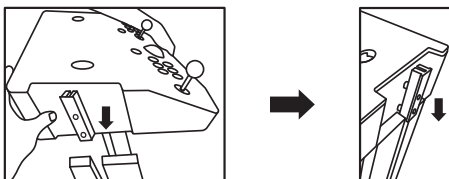


- Locate the spring grip at the bottom center near the back of the unit. Compress the handle to make the locking blocks move inwards.



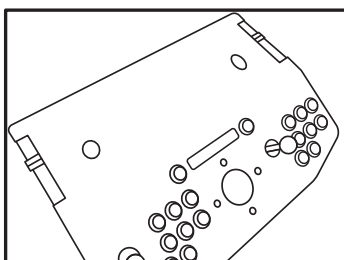
3. Align and Install the Control Unit

- Align the rectangular sliders on both sides of the control unit with the slots on the pedestal.
- Carefully slide the side sliders into the corresponding slots on both sides of the pedestal. Ensure the unit is level to avoid jamming.
- One person should check that the sliders on both sides are aligned correctly and can slide smoothly into the slots.
- If the sliders do not slide in easily, gently tap the flat surfaces next to the sliders to help them fit into place.



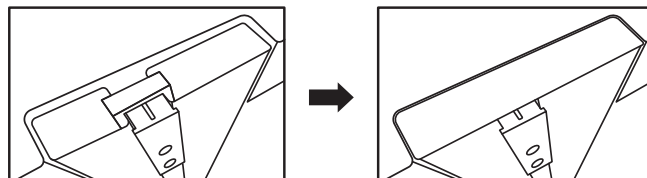
4. Lock the Control Unit

- Once the sliders are fully inserted, release the retractable handle to allow the locking blocks to spring back out.
- Adjust the control unit to align the four locking blocks with the slots on the pedestal, securing the unit's height and level.



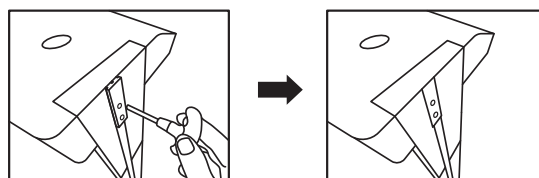
5. Secure with Metal Fasteners

- Install the pedestal's metal fasteners between the two aluminum brackets on the side of the pedestal as shown in the diagram.
- Insert the silicone cover into the side aluminum slot as illustrated.



6. Tighten the Screws

- Use the hex wrench to tighten the two screws on each of the sliders on both sides of the control unit.
- This will lock the control unit securely at the fixed height and prevent any wobbling.



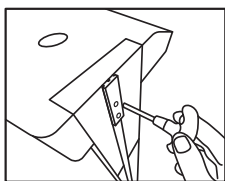
7. Setting Up Your ARCADE2TV™ -XR

Now that your ARCADE2TV™ -XR is assembled, follow these steps to set it up for an optimal gaming experience.

Adjusting the Height

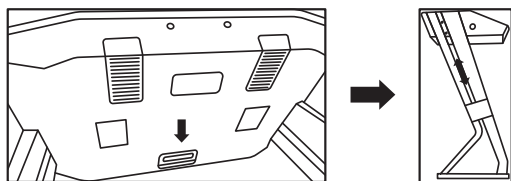
1. Loosen the Screws

- Use the hex wrench to loosen the screws on both sliders of the control unit.



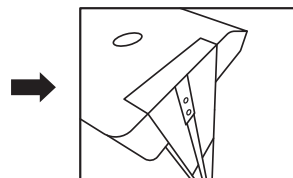
2. Adjust to Desired Height

- Choose from four height options: 1130mm, 1030mm, 930mm, and 830mm.
- Press the retractable handle at the bottom center near the back of the control unit to release the locking blocks.
- Adjust the control unit to the desired height and release the handle to lock the blocks in place.



3. Secure the Height

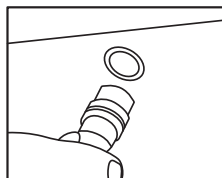
- Ensure the locking blocks are in place.
- Tighten the screws on the sliders to prevent any wobbling.



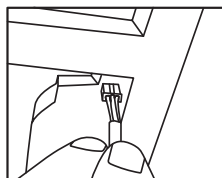
Connecting the LED Lighting Cable

1. Connect the LED Cable

- Take out the LED cable.
- Connect the round head end to the bottom of the control unit located at the back on the left-hand side. Align the round head with the block inside the socket and push it in until it locks in place.



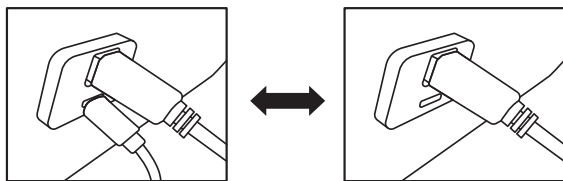
- Connect the other end to the connector on the LED strip located at the back of the acrylic panel on the left-hand side (facing the pedestal front).



Important Notes on Connection Combinations

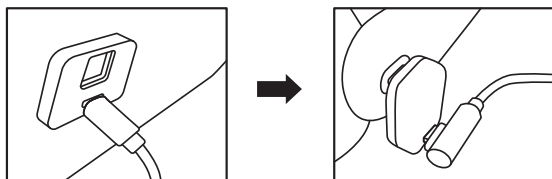
1. Wired Game Controller Use(Wireless Keyboard+mouse)

- Connect the USB-B port on the control unit to your computer or console using the given USB-B to USB-A cable.
- Connecting the USB-C port on the control unit to a power source for lighting effects using the given USB-C to USB-A cable is optional.



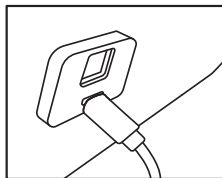
2. Wireless Controller Use

- Do not connect the USB-B port on the control unit to any master device.
- Connect the USB-C port to a 5V power source using the given USB-C to USB-A cable.
- Connect the Bluetooth™ dongle to a master device (Meta™ Quest™ VR headset or PC) via the USB-C port.



3. RGB Lighting Display Use

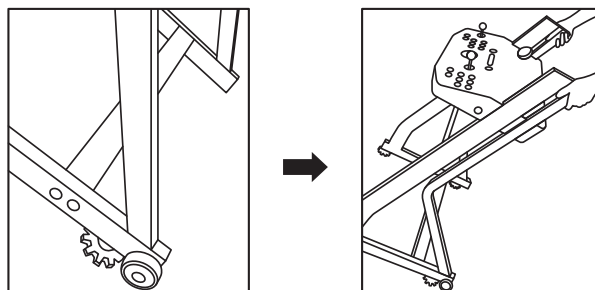
- Connect the USB-C port of the control unit to a 5V power source (the provided adapter or power bank) via the given 3-meter USB-C to USB-A cable.



Mobility

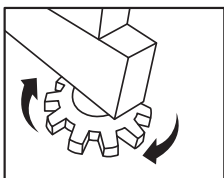
1. Moving the ARCADE2TV™-XR

- Stand behind the ARCADE2TV™-XR pedestal.
- Place one foot against the rear wheels of the pedestal.
- Lower your center of gravity and use your hands to pull the control unit backward, tilting the ARCADE2TV™-XR until the rear wheels are fully in contact with the ground and the frame does not touch the floor.
- Gently and slowly push forward to move the ARCADE2TV™-XR.



2. Adjusting the Leveling Feet

- The pedestal has four adjustable leveling feet at the bottom.
- Rotate the feet to adjust the height.
- On uneven surfaces, adjust the four feet until they all make contact with the ground evenly, ensuring the ARCADE2TV™-XR is stable and does not wobble.



8. Connecting to a PC/Mac™

Follow these steps to connect your X-Arcade™ ARCADE2TV™-XR to a PC or Mac™ for a seamless gaming experience.

1. Prepare the Cables

Take out the provided 3-meter USB-B to USB-A cable from the package.

2. Connect the USB-B Port

Locate the USB-B port on the back of the ARCADE2TV™-XR control unit. Connect one end of the USB-B to USB-A cable to the USB-B port on the control unit.

3. Connect to the Computer

Connect the other end of the USB-B to USB-A cable to an available USB port on your PC or Mac™.

4. Power the LED Lighting (Optional)

If you want to power the LED lighting effects, take out the provided 3-meter USB-C to USB-A cable.

Connect the USB-C end of the cable to the USB-C port on the control unit.

Connect the USB-A end of the cable to the provided power adapter and plug it into a power outlet.

5. Install Necessary Drivers

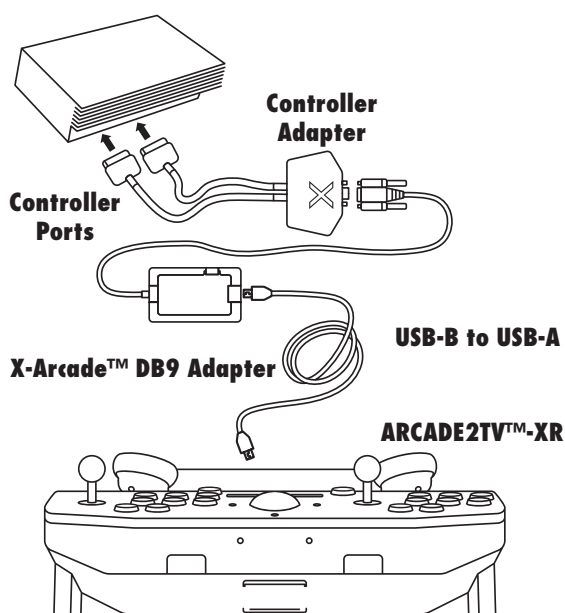
Most modern operating systems will automatically recognize the ARCADE2TV™-XR as a keyboard or game controller. If prompted, follow the on-screen instructions to install any necessary drivers. For the best experience, visit the X-Arcade™ website to download the latest drivers and software updates.

6. Configure the Controller Settings

Open the game controller settings on your PC or Mac™ to ensure the ARCADE2TV™-XR is recognized and properly configured.

You can customize the button mappings and sensitivity settings according to your preference.

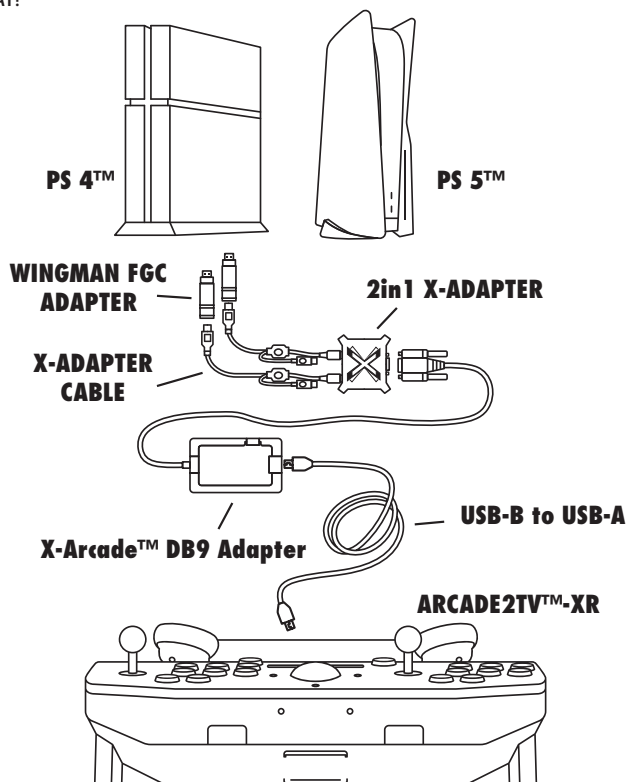
9. Connecting to a Game Console



MAKE SURE YOUR GAME CONSOLE IS POWERED OFF BEFORE ATTEMPTING TO CONNECT ANYTHING TO IT.

1. Plug the USB-B to USB-A cable into the USB-B port on the ARCADE2TV™-XR.
2. Plug the other end of the USB-B to USB-A cable into the USB-A port on the DB9 Adapter.
3. Connect the DB9 connector cable (already attached to the DB9 Adapter) to the X-Adapter (2-in-1 or 5-in-1).

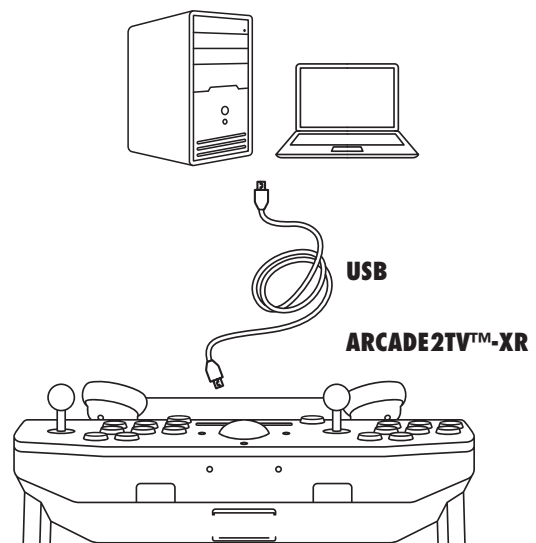
4. Insert the game console X-Adapter cords labeled "P1" and "P2" into your game system's respective "player" controller ports. (Only the "P1" side is used for the Solo™ controller.) Some adapters may require combination with Brook adapters.
5. Power on the game console. A red LED should light up on the ARCADE2TV™-XR.
6. PLAY!



Adapter Types

- 2-in-1 Adapter: Supports PlayStation™ 3 and Original Xbox™
- 5-in-1 Adapter: Supports Wii™, PS2™, PS1™, GameCube™, Dreamcast™
- XBOX XS/ONE™ Adapter: 2-in-1 Adapter + 2 x Brook™ Wingman XB2 adapters
- XBOX 360™ Adapter: 2-in-1 Adapter + 2 x Brook™ Wingman XB2 adapters
- PS5™ + PS4™ Adapter: 2-in-1 Adapter + 2 x Brook™ Wingman FGC adapters
(note that PS5™ only supports fighting games)

10. Operation Instructions



Plug the ARCADE2TV™-XR into any USB port on your PC/Mac™ or USB hub.

Keyboard Mode:

On a PC or Mac™, the buttons and joysticks are assigned to specific keyboard and mouse keys, think of the ARCADE2TV™-XR as an integrated keyboard and mouse. Moving the trackball simply moves your mouse cursor and when you press a button on the ARCADE2TV™-XR your computer thinks you are pressing a key on your keyboard or mouse. For example, if you open a word editor like notepad, you will notice that the buttons and joysticks type. You can adjust your mouse speed in your operating system to adjust the speed of the trackball.

DINPUT/XINPUT Mode:

These standardized game controller drivers are suitable for playing any old and modern games as mostly they support either DINPUT or XINPUT. The trackball still functions as a mouse for PC and is often used for playing trackball games or any other modern games that use a mouse for gaming.

GAME SETUP:

The first time you play a game, you must go to the game's options menu. Most likely it will be SETUP, SETUP CONTROLS, OPTIONS, or CONTROLS that leads you to the menu for assigning actions in games. The majority of computer games require that you first start the game, and then press either ESC or go to the main menu, where there will be some sort of icon that represents the OPTIONS for the game or the CONTROLS for the game. Once you find the game's OPTIONS, and subsequently, the game's CONTROLS, you must understand how to change the game's default keys to the keys on the ARCADE2TV™-XR. Make sure the controls in the game are set to the compatible driver mode (keyboard, DINPUT, or XINPUT).

Example: LEFT CONTROL key of the keyboard is actually the PLAYER 1 main action button, so if you want to have that first top left button assigned to a function like FIRE or ACTION, just highlight the action you wish to perform, FIRE (or similar), then in some fashion it will ask you to pick the key or button you wish to assign it to, then press the button on the ARCADE2TV™-XR. You must do this for PLAYER 1 and PLAYER 2 (if you are playing a 2 Player game) and set up all of the actions you wish to use. This only has to be done once, and it will be saved in the game itself.

Using with Emulators

The ARCADE2TV™-XR has been optimized for use with arcade-style video games and has a preset configuration matching the highly popular MAME™ arcade emulator on PC/Mac™. MAME™ is a software application that allows you to play arcade games on your computer. With MAME™, classic video games from the 70's and 80's are still alive and kicking today. These games are not remakes but the original, authentic classic arcade games you played in the 70's, 80's, and 90's. Check out the "Arcade Gaming" section of www.Xgaming.com for more info on MAME™.

Warning! MAME™ is an emulator. It reproduces, more or less faithfully, the behavior of various arcade machines. But hardware is useless without software, so images (files) of the ROMs which run on that hardware are required. Such ROMs, like all commercial software, are copyrighted.

NOTE: The first thing you want to do is test the ARCADE2TV™-XR on your PC using the game controller setting under device and printer to check that it is being recognized by your PC properly as one of the three drivers (keyboard, DINPUT, or XINPUT).

KEYBOARD mode should work right away in MAME™ without needing to remap. Once you have verified that the ARCADE2TV™-XR is working with the PC properly, be sure you are also using the newest version of the emulator. Links to download it can be found on the 'Support' section of our website at www.Xgaming.com. You then need to enable mouse support in your version of MAME™.

For Keyboard/DINPUT/XINPUT button layout, please refer to the section 14. Default Key mapping.

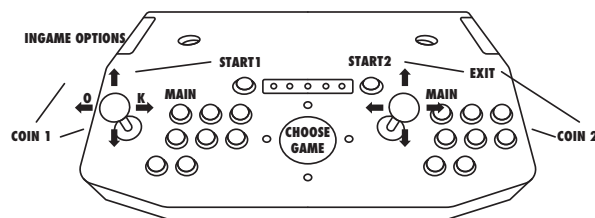
MAME™ SETUP

1. In MAME™ choose the 'Options' menu (at the top), and click Default Game Options from the drop-down menu.
2. Select the 'Game Controllers' tab.
3. Set your 'Default input layout' to 'Standard' from the drop-down list.
4. Click the box next to 'Enable Mouse Support' to add a check mark (if it is not already checked).

All of your MAME™ games will work with that configuration.

MAME™ USAGE

- **CHOOSE GAME:** You can use the trackball or left joystick to scroll through the list of games.
 - **BOOT GAME:** Boot up a game by double-clicking the BOOT GAME (M1) button.
 - **INSERT COINS:** After you boot up a game, use the COIN 1 (left pinball flipper) button on the ARCADE2TV™-XR to insert coins for player 1, COIN 2 (the right pinball flipper) for player 2.
 - **DISCLAIMER:** You can skip the screens which ask you to type "OK" by moving the player 1 joystick LEFT then RIGHT (left for "O" and right for "K").
 - **START GAME:** Press the white START 1 button to start a 1-player game, press START 2 for a 2-player game.
 - **OPTIONS:** While a game is running, you can change the controls by simultaneously pressing START 1 + COIN 1 (or the 'Tab' key on your keyboard) to access the controls menu.
 - **TRACKBALL SENSITIVITY:** From the options menu, you can adjust the sensitivity of the trackball movement by going to 'Analog Controls' and change the "Track X Sensitivity" and "Track Y Sensitivity" percentage to adjust the ball speed to what feels best for you in each game.
- NOTE: If you roll the ball fast and get backlash, you have the sensitivity set too high.**
- **EXIT GAME:** You can exit a game by simultaneously pressing START 2 + COIN 2.



FREE GAMES:

Check out the 'Support' section of our website www.Xgaming.com to play free games, get more in-depth information on emulators including MAME™, and links to TONS of other free games

Using with Game Consoles

On gaming consoles, the unit operates just like a standard gamepad, with buttons assigned to the arcade buttons. See the appendix for the appropriate button legend for your game system starting on the next page. You can play with four players using two ARCADE2TV™-XRs and two X-Adapters.

Digital vs. Analog Control Overview:

Handheld gamepad controllers for newer game consoles feature both digital and analog controlling devices. On the PlayStation™ DualShock™ controller, for example, there is a D-pad and two analog thumbsticks. Most games use the D-pad and/or left thumbstick to operate a game. The ARCADE2TV™-XR supports only one digital joystick per player, therefore adjustments need to be made to select whether this joystick functions as the D-pad or the left analog thumbstick. Switching between digital and analog control is easy and is slightly different for each console. See the key legends starting on the next page for directions on switching between analog and digital on each console, but in general:

PlayStation™ 1, 2, 3/Xbox™ & 360/Wii™/GameCube™:

- Modifier + Button 1 (Top-left) = Digital (D-PAD)
- Modifier + Button 2 (Top-middle) = Analog 1 (primary thumbstick)
- Modifier + Button 3 (Top-right) = Analog 2 (secondary thumbstick)

Dreamcast™:

- Toggle between analog thumbstick and D-PAD by pressing the Modifier on the side of the controller.

Analog Tilt Sensitivity:

While using Analog 1 mode (Modifier + Button 2) you can change how sensitive the movement is from normal full-tilt (default) to half-tilt sensitivity. Half-tilt sensitivity would be equal to moving the analog thumbstick on your gamepad to about halfway in any direction instead of fully (full-tilt). This is useful for games that you need more precise movement in, for example in a racing game, or to make your character move slower in your game.

Tilt Sensitivity Mode Toggle:

- Modifier + Button 7 = Half-Tilt Sensitivity
- Modifier + Button 8 = Full-Tilt Sensitivity (default)

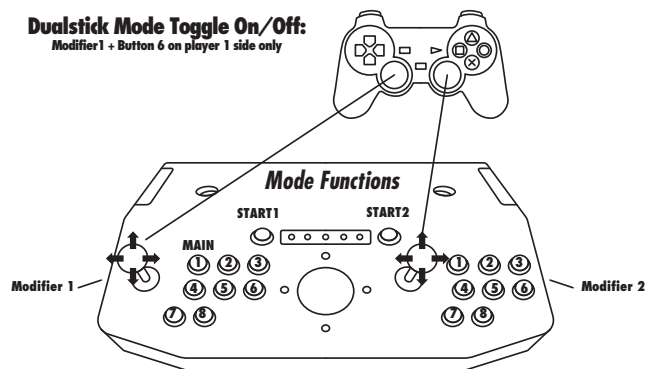
DualStick Mode (2-Player ARCADE2TV™-XR's Only):

Some games may require the use of 2 control devices simultaneously, for example console versions of arcade classics like Robotron™, SmashTV™, Crazy Climber™, and Karate Champ™. While the ARCADE2TV™-XR is not ideal for all types of games, for example first-person shooters, it now has the ability to play all of them thanks to the new DualStick Mode. DualStick Mode makes the second player joystick of a dual ARCADE2TV™-XR act like the right analog thumbstick on a gamepad. But it also makes the buttons on the player 2 side mirror those of the player 1 side, so the buttons on both sides can be used for single-player gameplay. As you may have gathered, this means that DualStick mode is for single-person gameplay, and requires a 2-player ARCADE2TV™-XR controller. It will have no effect on an ARCADE2TV™-XR Solo, for example.

DualStick mode also does not apply to Dreamcast™ gameplay as it only uses one analog thumbstick. DualStick mode is toggled on and off by pressing the Modifier and Button 6 simultaneously, and while in DualStick mode you can still change Joystick 1 between D-PAD and analog thumbstick as usual.

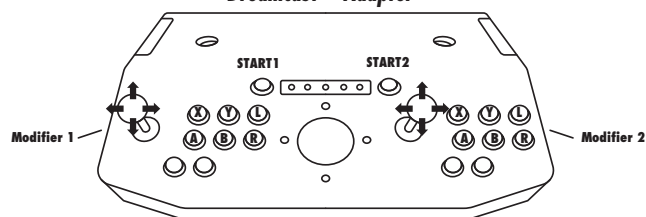
DualStick Mode Toggle On/Off:

Modifier 1 + Button 6 on player 1 side only



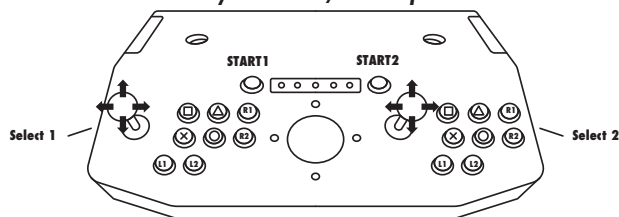
Console Legends

Dreamcast™ Adapter



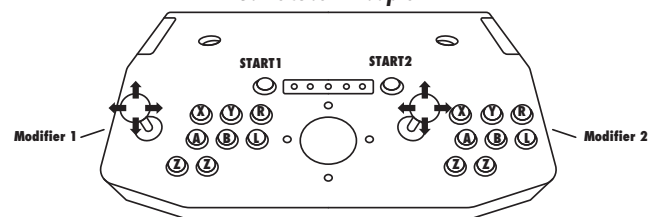
Press the Modifier button to switch between digital (D-PAD) and Analog Movement

Playstation 1™/2™ Adapter



- Select + □ = D-PAD (default)
- Select + △ = Analog 1 (Left Analog Thumbstick)
- Select + R1 = Analog 1 (Right Analog Thumbstick)
- Select + Start = True Digital Mode (PS1)
- Select + L1 = Slow Sensitivity for Analog 1
- Select + L2 = Normal Sensitivity for Analog 1

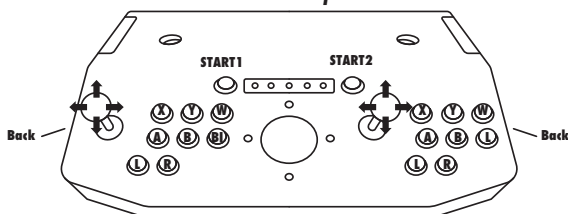
GameCube™ Adapter



- Modifier + Y = D-PAD (default)
- Modifier + X = Analog 1 (Left Analog Thumbstick)
- Modifier + R = Analog 1 (Right Analog Thumbstick)
- Modifier + Start = Toggles analog switch for R & L buttons (default on)
- Modifier + Left Z Button = Slow Sensitivity for Analog 1
- Modifier + Right Z Button = Normal Sensitivity for Analog 1

XBOX: BOTH PLAYER 1 AND PLAYER 2 CONNECTORS MUST BE CONNECTED

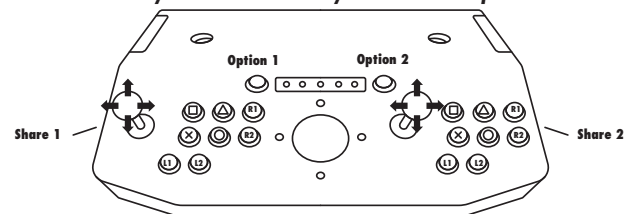
XBOX™ Adapter



- Back + X = D-PAD (default)
- Back + Y = Analog 1 (Left Analog Thumbstick)
- Back + B = Analog 1 (Right Analog Thumbstick)
- Back + L = Slow Sensitivity for Analog 1
- Back + R = Normal Sensitivity for Analog 1

PS5:PS4: BOTH PLAYER 1 AND PLAYER 2 CONNECTORS MUST BE CONNECTED

Playstation 5™ and Playstation 4™ Adapter

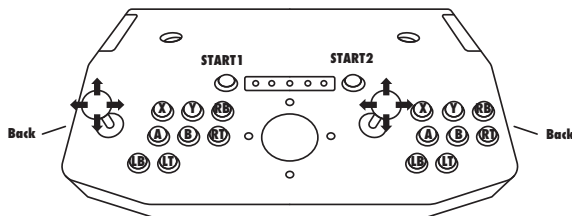


- Share + Y = D-PAD (default)
- Share + X = Analog 1 (Left Analog Thumbstick)
- Share + R1 = Analog 1 (Right Analog Thumbstick)
- Share + L1 = Slow Sensitivity for Analog 1
- Share + L2 = Normal Sensitivity for Analog 1
- Share + Start = Quick Menu - Same as Button on Adapter
- Share + R2 = Toggles DualStick Mode

*DualStick Mode : Joy2 acts as Analog 2 for P1, buttons on the right work for player 1 also.

XBOX: BOTH PLAYER 1 AND PLAYER 2 CONNECTORS MUST BE CONNECTED

XBOX X/S™, XBOX ONE™ and XBOX360™ Adapter



- Back + Y = D-PAD (default)**
- Back + X = Analog 1 (Left Analog Thumbstick)**
- Back + RB = Analog 1 (Right Analog Thumbstick)**
- Back + LB = Slow Sensitivity for Analog 1**
- Back + LT = Normal Sensitivity for Analog 1**
- Back + Start = Guide - 'X' button on Adapter is also Guide**
- Back + RT = Toggles DualStick Mode**

*DualStick Mode : Joy2 acts as Analog 2 for P1, buttons on the right work for player 1 also.

11. Using the Touch Panel

MODE and Turbo Features



The touch panel on the ARCADE2TV™-XR provides various functions to enhance your gaming experience. Here are the three primary uses of the touch panel:

- Switching Joystick Modes (A-pad and D-pad)
- Setting Turbo (Rapid Fire) Buttons
- Changing Driver Modes (Keyboard, DINPUT, XINPUT)
- Changing and adjusting RGB lighting effect

Switching Joystick Modes

You can switch the joystick mode between A-pad and D-pad for each player. Each player's mode is set separately. To change the joystick mode for a player:

1. Press the mode button on the touch panel.
 2. The joystick will switch from A-pad to D-pad or from D-pad to A-pad.
- This function is useful for different game control needs.

Setting Turbo (Rapid Fire) Buttons

Turbo mode allows one or more buttons to perform rapid continuous presses when held down, which is useful for shooter games. To set a button or buttons to turbo mode:

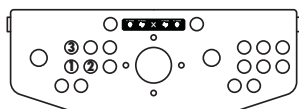
1. Press and hold the button or buttons you want to set to turbo mode.
2. While holding the buttons, press the turbo button on the touch panel.
3. The buttons you are holding will be set to turbo mode, performing rapid firing when pressed and held.

Note: Turbo mode is set separately for each player.

Turbo and joystick mode settings do not persist after powering off the unit. You will need to set them again if desired.

Changing Driver Modes for PC

You can use the touch panel to switch the ARCADE2TV™-XR's driver mode for connecting to a PC. The available modes are Keyboard, DINPUT, and XINPUT.



Follow these steps to change the driver mode:

Keyboard Mode:

1. Press and hold Button 1.
2. Press and hold the mode button on Player 1 for 5 seconds.
3. The controller will reboot and switch to Keyboard mode.

Default Layout:

DINPUT Mode:

1. Press and hold Button 2.
2. Press and hold the mode button on Player 1 for 5 seconds.
3. The controller will reboot and switch to DINPUT mode.

Default Layout:

XINPUT Mode:

1. Press and hold Button 3.
2. Press and hold the mode button on Player 1 for 5 seconds.
3. The controller will reboot and switch to XINPUT mode.

Changing RGB Lighting Effects

The button located at the center "X" logo on the touch panel allows you to change the RGB lighting effect of the acrylic light strip. To change the lighting effect:

Press the "X" button on the touch panel.

The lighting will switch between 20 different lighting effect.

Brightness Level Adjustment:

- To increase brightness: Press and hold the X logo, then press P1. After that, press and hold P1 Turbo to increase the brightness level.
- To decrease brightness: Press and hold the X logo, then press and hold P1 Turbo to dim the brightness.

Lighting Effects Speed Adjustment:

- To increase speed: Press and hold the X logo, then press and hold P2 Mode to increase the speed of the lighting effect.
- To decrease speed: Press and hold the X logo, then press and hold P2 Turbo to slow down the lighting animation effect.

12. Key Mapping Customization and Firmware Upgrades

The X-Arcade ARCADE2TV™-XR Configuration Tool, a Windows-based application, enables users to tailor the keys and actions of their ARCADE2TV™-XR. This segment guides you through the software's interface and usage.



Downloading and Installing the Software

1. Download: Access the latest version of the X-Arcade™ ARCADE2TV™-XR Configuration Tool from the X-Arcade™ website at www.xgaming.com.
2. Installation: Follow the on-screen instructions in the installer to complete the software setup.
3. Initialization: Launch the X-Arcade™ ARCADE2TV™-XR Configuration Tool. Upon connecting the ARCADE2TV™-XR, the software will display the driver mode and relevant UI.
4. Customization: You can now begin customizing the key mappings across different modes for a personalized gaming experience.

Software Features and Functions:



- **Firmware Upgrade:** Use this feature to update the ARCADE2TV™-XR's firmware. Download the latest version from the X-Arcade™ website.
- **Factory Reset:** Resets the ARCADE2TV™-XR to its original settings, erasing all custom mappings.
- **Save Configuration:** After remapping controls, use this to save your configurations.
- **Product Name:** Indicates the driver name of the ARCADE2TV™-XR.
- **Current Mode:** Displays the active driver mode of the ARCADE2TV™-XR.
- **Firmware Version:** Located in the bottom right corner, it shows the current firmware version of the ARCADE2TV™-XR.

Remap in Keyboard Mode

Steps:

1. **Select Player:** In section 1, choose the player for whom you wish to remap keys.
2. **Input Key Selection:** Next, select an INPUT key in section 2 for remapping.
3. **Assigning Keyboard/Mouse Key:** Click on a keyboard key in section 3 or a Mouse key or movement direction in section 4 to assign it to the chosen INPUT. Repeat steps 2 and 3 to remap additional keys as needed.

4. **Save Configuration:** Once remapping is complete, click 'Save Configuration' to store the new mappings in the firmware.

Remap in DINPUT Mode

Steps:

1. **Select Player:** In section 1, choose the player for whom you wish to remap keys.
2. **Input Key Selection:** In section 2, select the INPUT key you want to remap.
3. **Assigning Gamepad/Mouse Key:** Click on a gamepad or mouse key in section 3 or 4 to assign it to your chosen INPUT key. Complete this step for each key remap. Repeat this process to remap additional keys as necessary.
4. **Saving Changes:** After completing the remapping, click 'Save Configuration' to save your changes. Your new key mappings will be stored in the firmware.

Remap in XINPUT Mode

Currently not available.

13. VR and XR Mode Instructions

This mode requires a Meta™ Quest™ headset (Quest 2 or Quest 3). You will need to download the games using the redeem code provided. The redeem code is located on the last page of the user guide and is for one-time use only. Once the games are redeemed, the code is no longer valid and will be bound to your Meta™ Quest™ account for download and use forever. After downloading the games, you need to connect the Bluetooth dongle to the Quest headset. This is crucial as the ARCADE2TV™-XR will need to connect wirelessly to the dongle to control games in VR.

Connecting the Bluetooth™ Dongle

Default Connection: By default, the dongle is already bound to your ARCADE2TV™-XR unit. Simply plug the USB-C port into the Meta™ Quest™ headset's USB-C port to complete the connection.

Extended Battery: If you have an extended battery on the headset, connect the Bluetooth™ dongle's female USB-C port to the battery first before connecting the Bluetooth™ dongle to the Meta™ Quest™ headset. Be careful to avoid damaging the USB socket.

Verification: Once connected, toggle the trackball and see if the mouse cursor appears in your headset UI. If it shows up, the ARCADE2TV™-X R is connected properly and ready to play games.

Opening and Using VR Games Arcade Ranger VR Game:

Open Arcade Ranger: Launch the Arcade Ranger game.

Game Modes: In the game lobby, open Sandbox Mode or XR Mode.

Sandbox Mode

Enjoy using the ARCADE2TV™-XR in a virtual environment where you can build your own game room. Follow these steps to add virtual arcade machines to the map:

1. Launch the Arcade Ranger game and enter the game lobby.
2. Select Sandbox Mode from the menu.
3. Follow the in-game instructions to add virtual arcade machines to your map.

Mapping Virtual to Physical

Use the Quest™ controller to map the virtual arcade machine to the physical ARCADE2TV™-XR. Follow these steps:

1. Use the Quest controller to walk to the front of the virtual arcade cabinet.
2. Point at the arcade machine and press the trigger on the right-hand controller to select it.
3. Open the menu for the arcade machine.
4. Click the power button in the menu.
5. Select a game from your folder structure.
6. Enable X-Arcade™ mode by pressing the X-Arcade™ button.
7. Click PLAY to initiate the passthrough mode.

8. Follow the on-screen instructions to insert the Quest™ controllers into the VR controller holders.

9. Press the combination: P1 START + P2 START to complete the mapping.

10. Ensure your palms are visible in the headset to switch to hand tracking mode.

11. Return to the virtual environment with the controller mapped to the virtual arcade machine.

12. You can now play the arcade machine virtually.

XR Mode

Play arcade machines in passthrough mode, effectively creating your own virtual game room at home. Follow these steps:

1. Navigate to the build menu in the Arcade Ranger game.
2. Select any arcade machine from the menu.
3. Follow the guidance for mapping the ARCADE2TV™-XR unit.
4. Select X-Arcade™ mode to initialize the mapping process.
5. Follow the in-game tutorial for the Arcade Ranger game to complete the setup.

Adding Games

Due to copyright restrictions, X-Arcade™ cannot provide any ROMs. Please visit our support page for more information on how to use it. Alternatively, you can join the Arcade Ranger Discord to ask other players about how to add games.

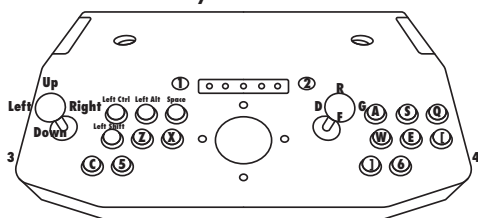
Note: All these features are subject to change by Pumpkin Studio, the developer of this game. This game updates over time, and they will continue to develop and enhance features, so the way of using it with ARCADE2TV™-XR might change in the future. It is advised to join the Arcade Ranger Discord to stay updated.

The Quantaar VR

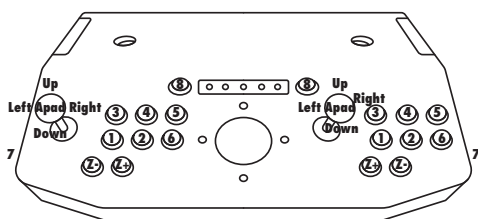
Not available at the moment.

14. Default Key Mapping

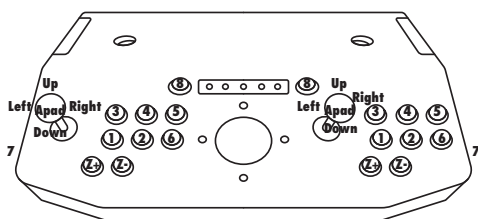
Keyboard Mode



DINPUT Mode



XINPUT Mode



15. Swapping the Ball Knob and Changing the Restrictor Gate

Swapping the Ball Knob

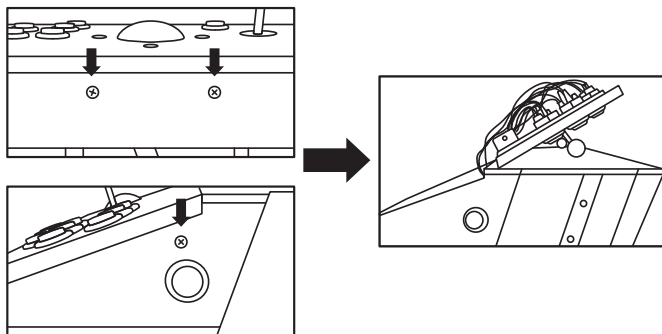
1. Take out the spare ball knob from the storage compartment.
2. Also, take out the wrench from the compartment.
3. Lift up the washer of the joystick to reveal the wrench slot near the joystick base.
4. Insert the wrench into the slot at an angle.
5. Hold the wrench steady with one hand and grip the ball knob with the other hand.
6. Turn the ball knob counterclockwise to loosen and remove it.
7. Keep the wrench steady and screw the oval knob onto the joystick shaft clockwise until tight.
8. Store the removed ball knob in the ARCADE2TV™-XR's storage compartment.

Changing the Restrictor Gate

ARCADE2TV™-XR comes with standard square 8-way restrictor gates on both joysticks. Additional restrictor gates (4-way, circular, and octagonal) are included for different gaming needs. Follow these steps to change the restrictor gate. Note: Only attempt this if necessary, as it requires technical skill and careful handling. Damage caused by improper handling is not covered under warranty. Opening the control panel will not void the warranty.

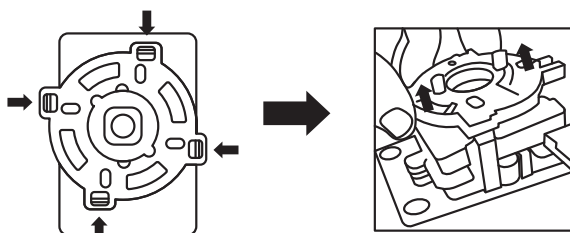
1. Open the Control Panel:

- Loosen and remove the two screws on the front of the ARCADE2TV™-XR
- Loosen and remove the screws on each side of the front panel.
- Gently lift the front panel and flip it upward, placing the bottom side facing upward on the rear panel.

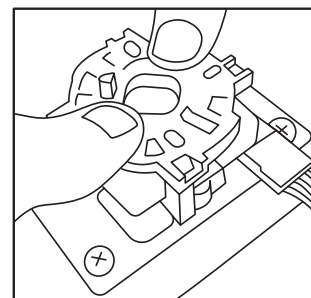


2. Replace the Restrictor Gate:

- Push the four plastic clips inward toward the center of the joystick base to release the restrictor gate.
- Lift the restrictor gate upward to remove it

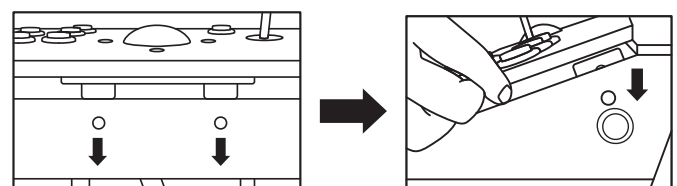


- Align the new restrictor gate with the four clips and press it down until you hear a click indicating it is securely in place.



3. Reassemble the Control Panel:

Carefully flip the front panel back to its original position.
Align the metal brackets on the wood panel with the screw holes in the base.
Secure the front panel with the two screws at the front and the two screws on the sides.



16. Using Magnetic Hooks and Storage Spaces

The ARCADE2TV™-XR has two retractable hooks located at the front end of the control unit's underside. These hooks are magnetically attached. The base of the hooks has ridges for added friction, making it easy for users to pull them out like a drawer. When needed, you can pull out the hooks and hang a VR headset, Bluetooth headphones, or VR controllers on them. When not in use, simply push the hooks back in, and the magnets will hold them securely, maintaining the product's appearance.

Storage Spaces:

The bottom of the ARCADE2TV™-XR control unit is equipped with two storage compartments. These compartments are used to store two spare oval knobs, a hex wrench for the side sliders, and an external hex wrench for changing the joystick ball knob. This helps users keep these accessories safe and prevent them from getting lost. To open these storage compartments, use your fingers to pull the elastic latch on the compartment door, similar to how you would open the battery cover on electronic devices or remote controls. Once opened, you will find foam padding inside, with the ball knobs hidden behind the foam and the wrenches visible immediately upon opening.

17. Troubleshooting

Here are some common issues you might encounter with your ARCADE2TV™-XR and how to resolve them:

1. Control Unit Not Responding

- **Check Connections:** Ensure all cables are securely connected. Check if the USB cable is damaged. Ensure the USB-B socket is clean and tight when connected.
- **Power Supply:** While power is not necessary for basic functionality, check if the power is connected by verifying if the panel is lighted when power is connected.
- **Restart Device:** Unplug all USB cables and plug them in again.
- **Driver Issues:** There are no specific drivers needed for the ARCADE2TV™-XR. If you encounter driver-related issues, update your PC operating system to the latest version.

2. LED Lighting Strip Not Working

- **Check Connections:** Ensure the LED control cable is securely connected on both the light strip and the control unit side.
- **Power Supply:** Verify that the USB-C cable is connected to a power source. The LED lighting will not work without power.
- **Inspect LED Strip:** If a portion of the LED strip doesn't light up, the LED light strip may be broken and need replacement.

3. Joystick or Buttons Not Responding

- **Check PC Settings:** Go to 'Devices and Printers' on your PC and find the ARCADE2TV™-XR. Open 'Game Controller' and test its inputs in the Windows game controller testing interface.
- **Driver Switching:** Perform driver switching to see if it fixes the issue.

- **Factory Reset:** Use the provided software to perform a factory reset.
- **Check Internal Cable Connections:** Verify the internal cable connections for the buttons and joystick.
- **Replace Buttons:** If a button is physically damaged, use the spare buttons stored inside the control unit for replacement.

4. Bluetooth™ Dongle Not Connecting

- **Check Power:** Ensure the ARCADE2TV™-XR is powered on and not connected to any PC or console device, as it will automatically switch to wired controller mode when connected.
- **Verify Pairing:** When the dongle is connected to a PC or VR headset, check the LED indicator:
- **Slow Blinking:** Not connected to the control unit.
- **Fast Blinking:** Connected wirelessly to the control unit.
- **Re-pairing:** If still not working, power off the control unit, power it on again, and repeat the pairing process:
- **Hardware Pairing Steps:**
 1. Unplug the dongle.
 2. Press and hold the side button on the dongle.
 3. Connect it to the VR headset or PC to power on.
 4. Release the button when the LED indicator blinks fast, indicating pairing is complete.
 5. **If still not working, power off the control unit, power it on again, and repeat the pairing process.**
- **Trackball Check:** Toggle the trackball to see if the mouse cursor moves, indicating a successful connection.

5. Trackball Not Moving the Cursor

- **Check Connections:** Ensure the trackball is securely connected inside the control unit.
- **Restart Device:** Unplug the ARCADE2TV™-XR and plug it in again.
- **Driver Issues:** There are no specific drivers needed for the ARCADE2TV™-XR.

6. ARCADE2TV™-XR is Wobbling

- **Adjust Leveling Feet:** Ensure all leveling feet are adjusted properly to keep the unit stable.
- **Check Assembly:** Verify that the control unit is securely attached to the pedestal and all screws are tightened.
- **Check Side Slider Screws:** Ensure the side slider screws are all tightened.

If you encounter any issues not covered in this section, please visit the support page at www.xgaming.com or contact our customer support team for further assistance.

18. Maintenance and Cleaning

Cleaning the Trackball

Input devices using mouse or trackball technology need to be cleaned periodically. Cleaning frequency for your X-Arcade's™ Trackball is much less than a normal trackball or mouse due to its design, but this depends on how you work with it, and can be affected adversely by spilling liquids on the ball or using it with sticky/dirty fingers. When moving the ball of the trackball feels slow or rough, it's time for a cleaning. To clean your X-Arcade's™ Trackball:

NOTE: Do not open the plastic trackball housing upside-down (ball facing down) as this will cause all of the parts to fall out. 1. Turn off your computer if using the PS/2 mouse port connection. 2. Unplug the X-Arcade™ from the computer. 3. Turn the X-Arcade™ over, laying it on a surface so that it does not touch the ball. (example: between two books, or on your legs with the ball in between). 4. Remove the screws on the bottom of the X-Arcade™ that are recessed in the rubber feet. Your X-Arcade™ may have small rubber covers over the screws in the center of these rubber feet, if so just pop them out. 5. Remove the bottom wooden panel. This is easiest done with a flat object like a butter knife (careful not to cut yourself) or some other wide flat object. Simply pry in between the cracks of the X-Arcade™ base and the panel, being careful not to scratch that beautiful veneer. 6. Remove the 4 bolts holding the plastic trackball housing into the wood casing. 7. With a phillips screwdriver, remove the 4 screws holding the trackball plastic casing together. Do not attempt to open the trackball plastic housing in this step. 8. Grab the bottom and top part of the plastic housing with both hands, holding them closed/together firmly, and turn it over so that the ball is facing up. 9. Remove the top half (ball side) of the plastic housing. 10. Remove the ball, and clean it with tap water and, if needed, dishwashing detergent. Dry it with a lint-free cloth. 11. Clean the rollers and idler (the 3 metal cylinders that the ball sits on) using a premoistened cleaning swab or cotton swab with rubbing alcohol. Allow surfaces to dry completely before reassembling. 12. Reassemble following the above steps backwards. Your X-Arcade's™ Trackball is cleaned, and ready for action!

General Maintenance Tips

1. Regular Cleaning

- **Control Unit:** Use a soft, dry cloth to wipe down the control unit. Avoid using harsh chemicals or abrasive materials that could damage the surface.
- **Joysticks and Buttons:** Clean the joysticks and buttons with a microfiber cloth. If necessary, use a mild soap solution and a damp cloth to remove any sticky residue.
- **Trackball:** Clean the trackball regularly to ensure smooth operation. Remove the trackball and gently clean it with a damp cloth. Clean the trackball housing with a dry cloth.

2. Inspect Connections

- Regularly check all cable connections to ensure they are secure and free from damage.
- Inspect the USB ports for any debris or damage and clean them if necessary.

3. Check for Loose Screws

- Periodically check all screws, including those on the control unit, pedestal, and side sliders. Tighten any loose screws to ensure the stability and integrity of the unit.

4. Maintain the LED Lighting Strip

- Ensure that the LED lighting strip and its connections are secure. If any part of the strip is not functioning, inspect the connections and replace the strip if necessary.

5. Protect the Touch Panel

- Keep the touch panel clean and free from scratches. Use a screen protector if possible to prevent damage.
- Avoid pressing the touch panel with excessive force.

6. Store Spare Parts Properly

- Keep spare parts such as the hex wrench, Allen wrench, and spare knobs in the designated storage compartments to prevent loss and damage.

7. Keep the Unit Dry

- Avoid exposing the ARCADE2TV™-XR to moisture or liquids. If the unit gets wet, dry it immediately with a soft cloth to prevent damage to the electronic components.

8. Handle with Care

- When moving the unit, use the wheels and ensure the path is clear of obstacles to avoid damaging the pedestal or control unit.
- Avoid dropping or applying excessive force to the control unit and pedestal.

9. Firmware Updates

- Regularly check for firmware updates to ensure your ARCADE2TV™-XR has the latest features and improvements. Use the X-Arcade™ ARCADE2TV™-XR Configuration Tool to update the firmware as needed.

10. Store in a Safe Place

- When not in use, store the ARCADE2TV™-XR in a safe, dry place to protect it from dust and potential damage.

19. Warranty Information

Thank you for purchasing the ARCADE2TV™-XR. We are committed to providing you with a high-quality product and excellent customer service. Please read the following warranty information to understand the terms and conditions of your product warranty.

1. Warranty Period

The ARCADE2TV™-XR comes with a one-year limited warranty from the date of purchase. This warranty covers defects in materials and workmanship.

2. Warranty Coverage

This warranty covers the original purchaser only and is not transferable.

The warranty covers the ARCADE2TV™-XR control unit, pedestal, and all included accessories such as the joysticks, buttons, trackball, LED lighting strip, touch panel, magnetic hooks, storage compartments, and Bluetooth™ dongle.

The warranty does not cover normal wear and tear, cosmetic damage, damage caused by misuse, neglect, improper installation, unauthorized modifications, or accidents.

3. Warranty Claim Process

If you experience any issues with your ARCADE2TV™-XR that you believe are covered under this warranty, please contact our customer support team at support@xgaming.com or visit our website at www.xgaming.com for assistance.

Provide your proof of purchase, a description of the issue, and any relevant photos or videos to help us assess the problem.

Our customer support team will guide you through the troubleshooting steps. If the issue cannot be resolved, we will send you the necessary replacement parts to fix the problem.

4. Replacement Parts and Service

If a replacement part is needed, our customer support team will provide detailed instructions on how to install the part.

The cost of shipping the replacement parts to you will be covered by X-Arcade™.

If the unit is defective and not repairable by the user, we will send a replacement of the whole unit.

5. Limitations and Exclusions

This warranty does not cover any third-party products or software used in conjunction with the ARCADE2TV™-XR.

Any unauthorized repairs or modifications will void this warranty.

This warranty is limited to the repair or replacement of the ARCADE2TV™-XR and does not cover any indirect, incidental, or consequential damages.

6. No Extended Warranty

There is no extended warranty available for purchase.

We are dedicated to ensuring your satisfaction with the ARCADE2TV™-XR. If you have any questions or need further assistance, please do not hesitate to reach out to our customer support team. Thank you for choosing X-Arcade™.

20. Customer Support

We are committed to providing excellent customer support to ensure you have the best experience with your ARCADE2TV™-XR. If you encounter any issues or have questions, our dedicated support team is here to help.

1. Contact Information

Email: For any inquiries, please email us at support@xgaming.com. We aim to respond to all emails within 24 hours.

Website: Visit our website at www.xgaming.com for additional support resources, including FAQs, user manuals, and troubleshooting guides.

2. Support Hours

Our customer support team is available Monday through Friday, from 9:00 AM to 6:00 PM (EST). We are closed on weekends and public holidays.

3. Online Resources

FAQs: Check our Frequently Asked Questions section on our website for quick answers to common questions.

User Manuals: Download the latest user manuals and guides from our website.

Troubleshooting Guides: Access step-by-step troubleshooting guides to help resolve common issues.

4. Warranty and Returns

For warranty claims and return instructions, please refer to the Warranty Information section of this user guide or visit our website.

We are dedicated to ensuring your satisfaction with the ARCADE2TV™-XR. If you have any questions or need further assistance, please do not hesitate to contact our customer support team. Thank you for choosing Xgaming.

21. FCC Compliance Statement

This device complies with part 15 of the FCC Rules. Operation is subject to the following two conditions: (1) This device may not cause harmful interference, and (2) this device must accept any interference received, including interference that may cause undesired operation.

Any changes or modifications not expressly approved by the party responsible for compliance could void the user's authority to operate the equipment.

This equipment has been tested and found to comply with the limits for a Class B digital device, pursuant to part 15 of the FCC Rules. These limits are designed to provide reasonable protection against harmful interference in a residential installation. This equipment generates, uses and can radiate radio frequency energy and, if not installed and used in accordance with the instructions, may cause harmful interference to radio communications. However, there is no guarantee that interference will not occur in a particular installation. If this equipment does cause harmful interference to radio or television reception, which can be determined by turning the equipment off and on, the user is encouraged to try to correct the interference by one or more of the following measures:

- Reorient or relocate the receiving antenna.
- Increase the separation between the equipment and receiver.
- Connect the equipment into an outlet on a circuit different from that to which the receiver is connected.
- Consult the dealer or an experienced radio/TV technician for help.

This equipment complies with FCC radiation exposure limits set forth for an uncontrolled environment.

This transmitter must not be co-located or operating in conjunction with any other antenna or transmitter.